

По вопросам продаж и поддержки обращайтесь:

Архангельск (8182)63-90-72  
Астана (7172)727-132  
Астрахань (8512)99-46-04  
Барнаул (3852)73-04-60  
Белгород (4722)40-23-64  
Брянск (4832)59-03-52  
Владивосток (423)249-28-31  
Волгоград (844)278-03-48  
Вологда (8172)26-41-59  
Воронеж (473)204-51-73  
Екатеринбург (343)384-55-89

Иваново (4932)77-34-06  
Ижевск (3412)26-03-58  
Казань (843)206-01-48  
Калининград (4012)72-03-81  
Калуга (4842)92-23-67  
Кемерово (3842)65-04-62  
Киров (8332)68-02-04  
Краснодар (861)203-40-90  
Красноярск (391)204-63-61  
Курск (4712)77-13-04  
Липецк (4742)52-20-81  
Киргизия (996)312-96-26-47

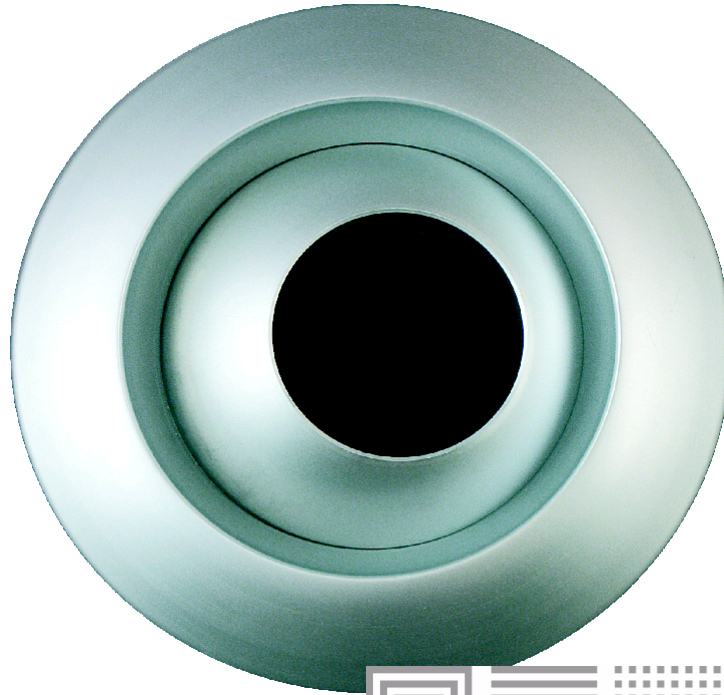
Магнитогорск (3519)55-03-13  
Москва (495)268-04-70  
Мурманск (8152)59-64-93  
Набережные Челны (8552)20-53-41  
Нижний Новгород (831)429-08-12  
Новокузнецк (3843)20-46-81  
Новосибирск (383)227-86-73  
Омск (3812)21-46-40  
Орел (4862)44-53-42  
Оренбург (3532)37-68-04  
Пенза (8412)22-31-16  
Казахстан (7273)495-231

Пермь (342)205-81-47  
Ростов-на-Дону (863)308-18-15  
Рязань (4912)46-61-64  
Самара (846)206-03-16  
Санкт-Петербург (812)309-46-40  
Саратов (845)249-38-78  
Севастополь (8692)22-31-93  
Симферополь (3652)67-13-56  
Смоленск (4812)29-41-54  
Сочи (862)225-72-31  
Ставрополь (8652)20-65-13  
Таджикистан (992)427-82-92-69

Сургут (3462)77-98-35  
Тверь (4822)63-31-35  
Томск (3822)98-41-53  
Тула (4872)74-02-29  
Тюмень (3452)66-21-18  
Ульяновск (8422)24-23-59  
Уфа (347)229-48-12  
Хабаровск (4212)92-98-04  
Челябинск (351)202-03-61  
Череповец (8202)49-02-64  
Ярославль (4852)69-52-93

Единый адрес для всех регионов: [mde@nt-rt.ru](mailto:mde@nt-rt.ru) || <http://madel.nt-rt.ru/>

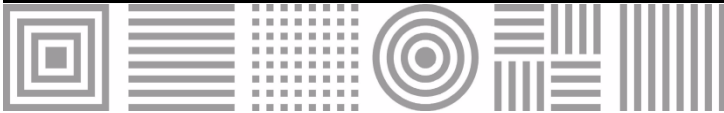
MADEL®



actif



## KAM Jet nozzles



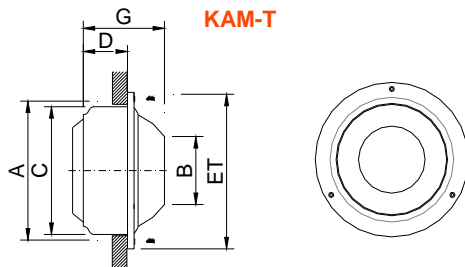
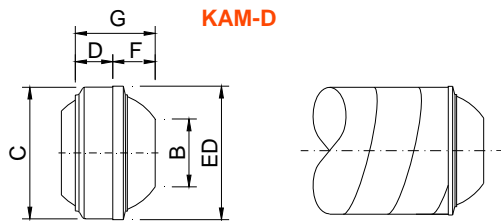
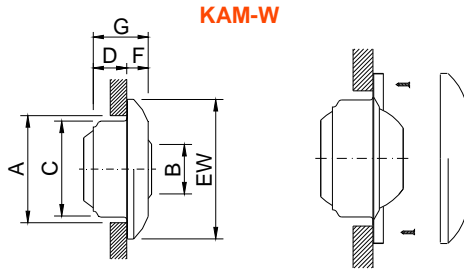
MADEL®

The jet nozzles of **KAM** Series have been designed specifically to provide air diffusion into large spaces. They are special in so far as they can achieve a long throw on either heating or cooling whilst giving complete flexibility of direction.

The design is the result of a collaboration with **Benedito DESIGN** the brief being to provide a diffuser that encompasses smooth modern aesthetic lines that would appeal to the architectural market.



**MAD E L**<sup>®</sup>



**CLASSIFICATION**

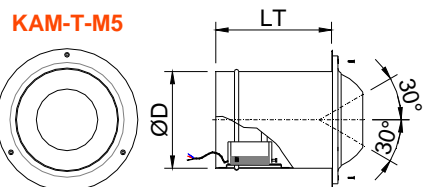
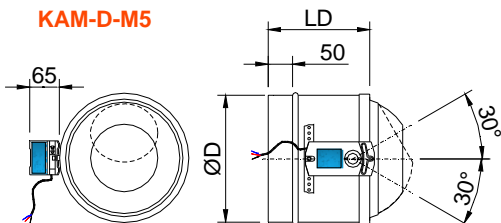
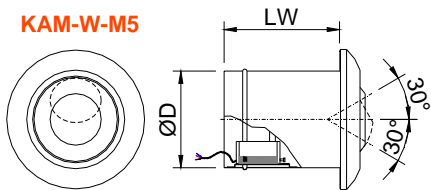
**KAM-W** Supply air jet nozzle, manually adjustable, suitable for mounting in a wall having a connection to either a circular or rectangular duct.

**KAM-D** Supply air jet nozzle, manually adjustable, suitable for direct mounting onto a visible circular duct.

**KAM-T** Supply air jet nozzle, manually adjustable, suitable for mounting in a wall. Fixing by visible screws.

**...-M5-24/230** Jet nozzle with supply air angle adjustable by means of actuator type On / Off.

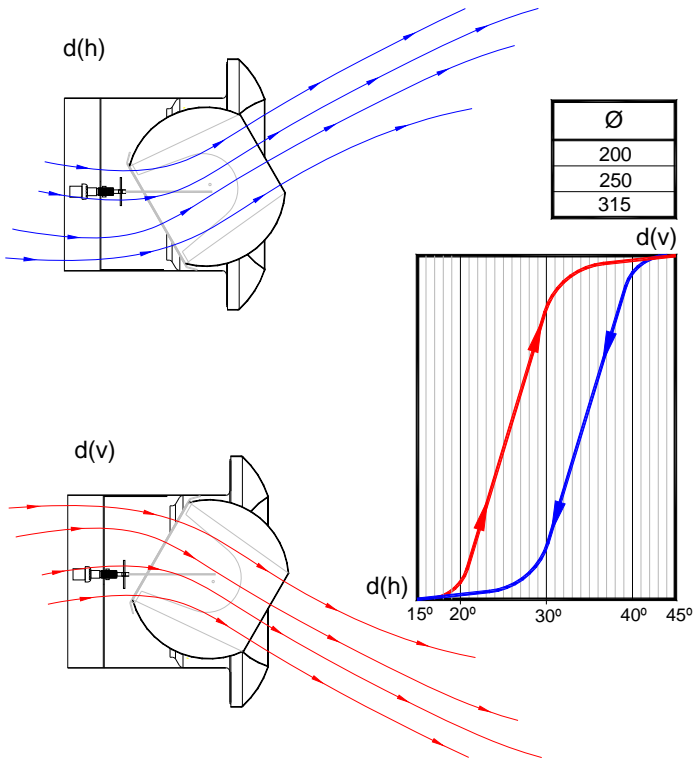
∅	A	B	C	D	EW	ED	ET	F	G
125	135	61	123	55	181	126	165	27	85
160	170	80	158	55	231	162	205	34	92
200	210	102	198	74	289	203	252	40	122
250	260	130	248	99	359	253	304	48	158
315	325	166	313	126	423	320	390	44	171
400	410	212	398	162	503	404	490	62	224



KAM	∅D	LW	LD	LT
250	248	302	199	302
315	313	330	211	330
400	398	390	222	390



**KAM-ACTIF**



**KAM-ACTIF** Jet nozzle that is autonomously thermally adjustable by means of a thermodynamic piston.

The jet nozzles of the KAM-ACTIF series are designed for air diffusion in large spaces and special applications, thanks to the long throw and directional control of their air streams and their capacity to handle large volumes of air.

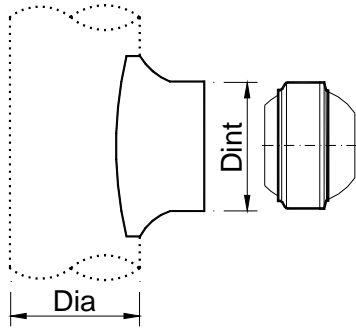
The supply air angle of the air streams varies in accordance with the supply air temperature, reducing stratification.

**MATERIAL**

Jet nozzle constructed from aluminium. Seal of rotation from immutable material, classified M1 and F2 as regards fire and smoke safety.

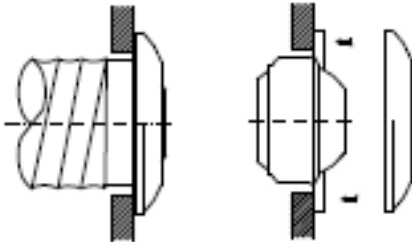
Time from 30° to 60°: 30 min.

## IEH

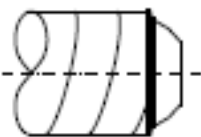


	Dint
IEH-KAM-D-125-Dia	125
IEH-KAM-D-160-Dia	160
IEH-KAM-D-200-Dia	200
IEH-KAM-D-250-Dia	250
IEH-KAM-D-315-Dia	315
IEH-KAM-D-400-Dia	400

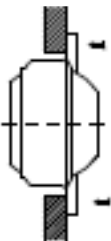
### 1) KAM-W



### 2) KAM-D



### 3) KAM-T



## ACCESSORIES

**IEH** Pressed collar saddle for KAM-D mounting onto a visible circular duct.

## FIXING SYSTEMS

- 1) Wall or ceiling mounting by means of hidden screws behind the ring.
- 2) Connection into a circular metallic duct.
- 3) Fixing by visible screws.

## FINISHES

**M9006** Lacquer in metallic grey colour, similar to RAL 9006.

**R9010** Lacquer in white colour RAL 9010.

**M9016** Lacquer in white colour similar to RAL 9016.

**RAL...** Lacquer in other colours (RAL specifications).

## SPECIFICATION TEXT

Supply and mounting of manually adjustable long throw jet nozzle for wall mounting series **KAM-W M9016 dim. 125** constructed from aluminium, with seal of rotation from immutable material classified M1 and paint in white **M9016**. With hidden screws behind ring. Manufacturer **MADEL**.

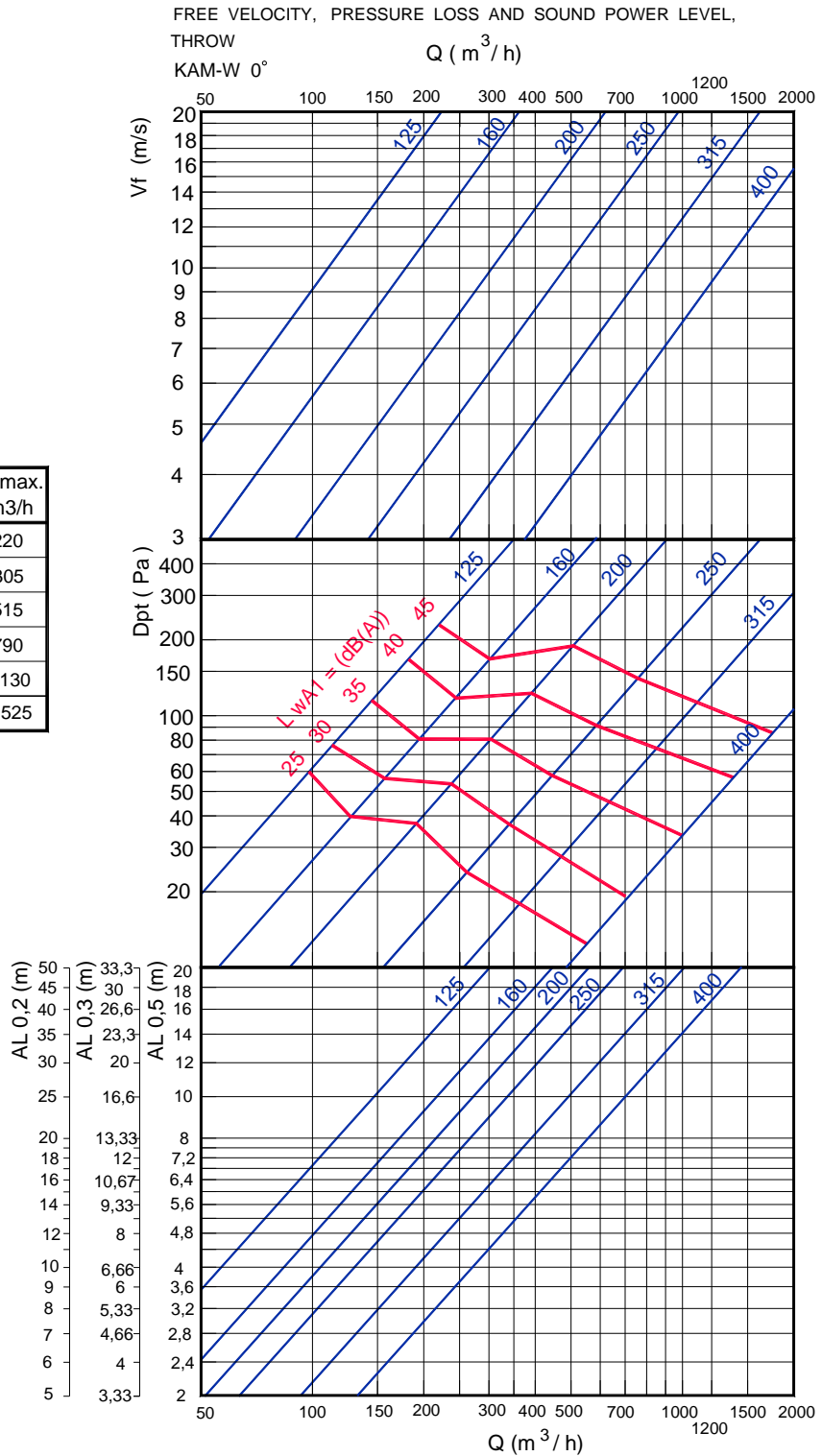
# KAM

## RECOMMENDED VELOCITY.

KAM	Vmin m/s	Vmax m/s
125	2,5	19,7
160	2,5	16,9
200	3	16,8
250	3,5	16,2
315	4	13,8
400	4	13,8

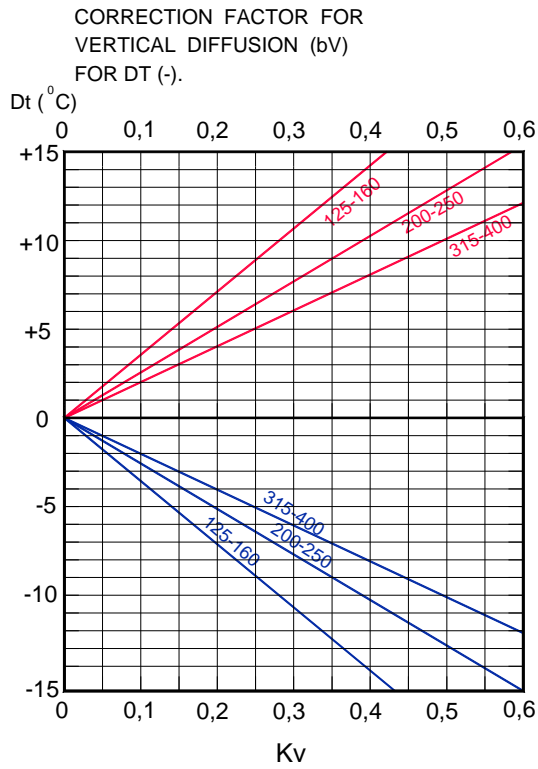
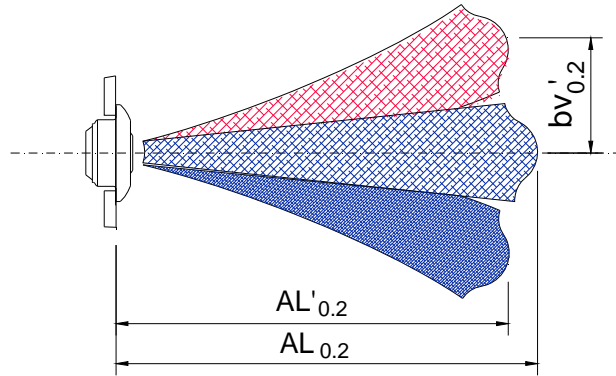
## FREE FACE AREA (m2).

KAM	Ak m2	Afree m2	Qmin. m3/h	Qmax. m3/h
125	0,0123	0,0031	28	220
160	0,0201	0,005	45	305
200	0,0314	0,0085	92	515
250	0,0491	0,0135	170	790
315	0,0779	0,0226	325	1130
400	0,125	0,0353	500	1525



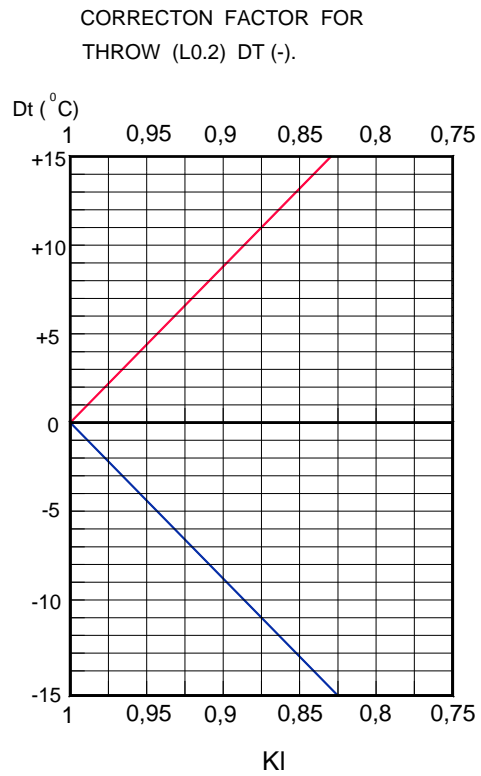
Note: In MadeMedia Octava band centre frequency in Hz.

# KAM



$$bv'_{0.2} = Kv \times Al_{0.2}$$

$Kv$  = Correction factor for the vertical diffusion.



$$Al'_{0.2} = Kl \times Al_{0.2}$$

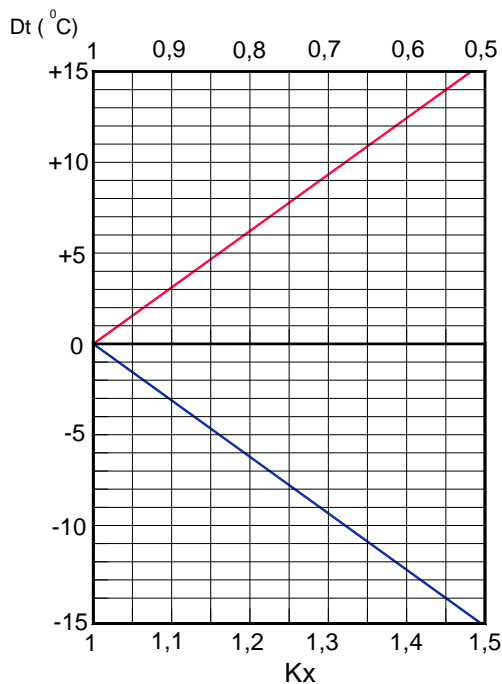
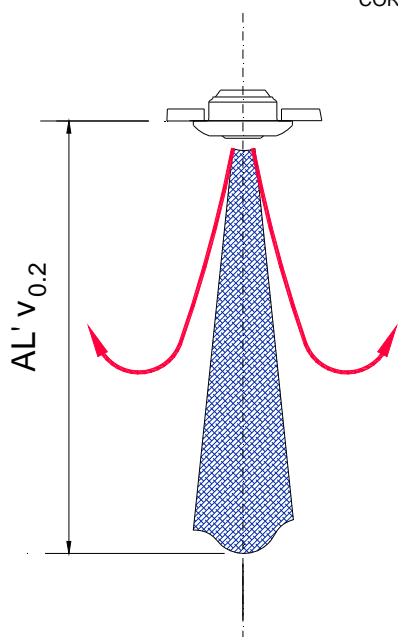
$Kl$  = Correction factor for the throw.



MADEL®

KAM

CORRECTION FACTOR FOR VERTICAL THROW (AL<sub>0,2</sub>) DT



$$AL' v_{0,2} = Kx \times AL_{0,2}$$

По вопросам продаж и поддержки обращайтесь:

Архангельск (8182)63-90-72  
 Астана (7172)727-132  
 Астрахань (8512)99-46-04  
 Барнаул (3852)73-04-60  
 Белгород (4722)40-23-64  
 Брянск (4832)59-03-52  
 Владивосток (423)249-28-31  
 Волгоград (844)278-03-48  
 Вологда (8172)26-41-59  
 Воронеж (473)204-51-73  
 Екатеринбург (343)384-55-89

Иваново (4932)77-34-06  
 Ижевск (3412)26-03-58  
 Казань (843)206-01-48  
 Калининград (4012)72-03-81  
 Калуга (4842)92-23-67  
 Кемерово (3842)65-04-62  
 Киров (8332)68-02-04  
 Краснодар (861)203-40-90  
 Красноярск (391)204-63-61  
 Курск (4712)77-13-04  
 Липецк (4742)52-20-81  
 Киргизия (996)312-96-26-47

Магнитогорск (3519)55-03-13  
 Москва (495)268-04-70  
 Мурманск (8152)59-64-93  
 Набережные Челны (8552)20-53-41  
 Нижний Новгород (831)429-08-12  
 Новокузнецк (3843)20-46-81  
 Новосибирск (383)227-86-73  
 Омск (3812)21-46-40  
 Орел (4862)44-53-42  
 Оренбург (3532)37-68-04  
 Пенза (8412)22-31-16  
 Казахстан (7273)495-231

Пермь (342)205-81-47  
 Ростов-на-Дону (863)308-18-15  
 Рязань (4912)46-61-64  
 Самара (846)206-03-16  
 Санкт-Петербург (812)309-46-40  
 Саратов (845)249-38-78  
 Севастополь (8692)22-31-93  
 Симферополь (3652)67-13-56  
 Смоленск (4812)29-41-54  
 Сочи (862)225-72-31  
 Ставрополь (8652)20-65-13  
 Таджикистан (992)427-82-92-69

Сургут (3462)77-98-35  
 Тверь (4822)63-31-35  
 Томск (3822)98-41-53  
 Тула (4872)74-02-29  
 Тюмень (3452)66-21-18  
 Ульяновск (8422)24-23-59  
 Уфа (347)229-48-12  
 Хабаровск (4212)92-98-04  
 Челябинск (351)202-03-61  
 Череповец (8202)49-02-64  
 Ярославль (4852)69-52-93